

Vehicle Details

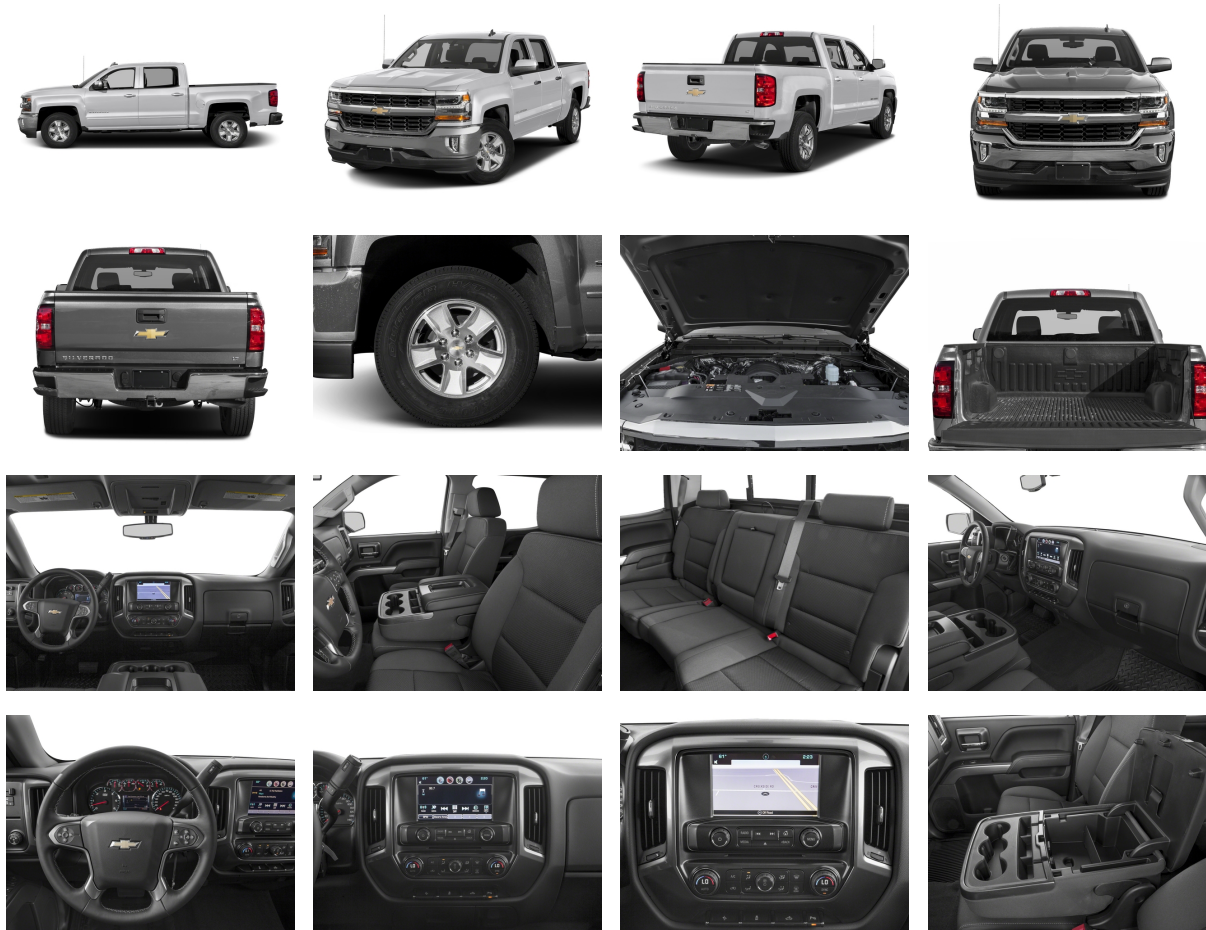


Stock #JJVIN3GCUKREC1JG624907**Year**2018**Stock Type**Used**Make**Chevrolet**Model**Silverado 1500**Style**4WD Crew Cab 143.5" LT w/1LT**Exterior Color**Silver Ice Metallic**Interior Color**Jet Black

Disclaimer

Sales Tax, Title Fee, License & Registration Fees, Dealer Documentary Fee, Finance Charges, Emission Testing Fees and / or Compliances Fees are in addition to the advertised price. Prices and special offers are subject to change. Mileage listings are estimates and are not necessarily accurate odometer readings.

Photos



Features

Standard Equipment

ENTERTAINMENT

- 6-speaker audio system
- Audio system, Chevrolet MyLink Radio with 8" diagonal color touch-screen, AM/FM stereo with seek-and-scan and digital clock, includes Bluetooth streaming audio for music and select phones; USB ports; auxiliary jack; voice-activated technology for radio and phone; and Shop with the ability to browse, select and install apps to your vehicle. Apps include Pandora, iHeartRadio, The Weather Channel and more.
- BLUETOOTH FOR PHONE, PERSONAL CELL PHONE CONNECTIVITY TO VEHICLE AUDIO SYSTEM

AutoDiary

Used 2018 Chevrolet Silverado 1500 4WD Crew Cab 143.5" LT w/1LT (#JJ)

Features (continued)

ENTERTAINMENT

- Chevrolet 4G LTE and available built-in Wi-Fi hotspot offers a fast and reliable Internet connection for up to 7 devices; includes data trial for 1 month or 3GB (whichever comes first); EFFECTIVE WITH RETAIL SALES STARTING 5/1/2018. (Available Wi-Fi requires compatible mobile device, active OnStar service and data plan. Data plans provided by AT&T. Visit onstar.com for details and system limitations.)
- Radio, HD
- SINGLE-SLOT CD/MP3 PLAYER
- SiriusXM Satellite Radio is standard on nearly all 2018 GM models. Enjoy a 3-month All Access trial subscription with over 150 channels including commercial-free music, plus sports, news and entertainment. Plus listening on the app and online is included, so you'll hear the best SiriusXM has to offer, anywhere life takes you. Welcome to the world of SiriusXM. (If you decide to continue service after your trial, the subscription plan you choose will automatically renew thereafter and you will be charged according to your chosen payment method at then-current rates. Fees and taxes apply. To cancel

EXTERIOR

- Active aero shutters, front
- BUMPER, FRONT CHROME
- BUMPER, REAR CHROME
- CornerStep, rear bumper
- Door handles, body-color
- GLASS, DEEP-TINTED
- Grille surround, chrome
- Headlamps, high intensity discharge (HID) projector-beam with LED signature DRL
- Lamps, cargo area, cab mounted with switch on center switch bank
- MIRROR CAPS, BODY-COLOR
- Mirrors, outside heated power-adjustable (includes driver's side spotter mirror) (Body-color.)
- Moldings, bodyside, body color
- Recovery hooks, front, frame-mounted, black (Included with 4WD models only.) (Standard with 4WD models. Available with 2WD models.)
- Remote Locking Tailgate (Deleted with (ZW9) pickup box delete.)
- Tailgate and bed rail protection cap, top
- Tailgate, EZ-Lift and Lower
- Tire carrier lock, keyed cylinder lock that utilizes same key as ignition and door
- Tire, spare P255/70R17 all-season, blackwall (Included and only available with (RBZ) P255/70R17 all-season, blackwall tires.)

AutoDiary

Used 2018 Chevrolet Silverado 1500 4WD Crew Cab 143.5" LT w/1LT (#JJ)

Features (continued)

EXTERIOR

- TIRES, P255/70R17 ALL-SEASON, BLACKWALL
- Wheel, full-size spare, 17" x 7" (43.2 cm x 17.8 cm) aluminum (Included and only available with model K15543 and (L83) 5.3L EcoTec3 V8 engine or (LV3) 4.3L EcoTec3 V6 engine, model *15703 and (LV3) 4.3L EcoTec3 V6 engine or model K15753 with (L83) 5.3L EcoTec3 V8 engine and (NHT) Max Trailering Package. With 22" LPO wheels requires (LV3) 4.3L EcoTec3 V6 engine and CC15543 model.)
- Wheelhouse liners, rear (Requires Crew Cab or Double Cab model.)
- WHEELS, 17" X 8" (43.2 CM X 20.3 CM) BRIGHT MACHINED ALUMINUM

INTERIOR

- Air conditioning, single-zone
- Assist handle, front passenger on A-pillar
- Cruise control, electronic with set and resume speed, steering wheel-mounted
- DOOR LOCKS, POWER
- Driver Information Center, 4.2-inch diagonal color display includes driver personalization, warning messages and vehicle information
- Floor covering, color-keyed carpeting with rubberized vinyl floor mats (Double Cab and Crew Cabs include second row floor mats)
- Instrumentation, 6-gauge cluster featuring speedometer, fuel level, engine temperature, tachometer, voltage and oil pressure
- REMOTE KEYLESS ENTRY, WITH 2 TRANSMITTERS
- Seat, rear 60/40 folding bench (folds up), 3-passenger (includes child seat top tether anchor) (Not available on Regular Cab models.)
- Seats, front 40/20/40 split-bench, 3-passenger, available in cloth or leather includes driver and front passenger recline with outboard head restraints and center fold-down armrest with storage. Also includes manually adjustable driver lumbar, lockable storage compartment in seat cushion, and storage pockets. (Leather with (KA1) heated seat cushions and seat backs is an available extra charge option with (HIY) Jet Black leather appointed interior trim and requires (PCM) LT Convenience Package, (PDA) Texas Edition or (PDU) All Star Edition. (Leather with (KA1) heated seat cushions and seat back
- Steering column, Tilt-Wheel, manual with theft-deterrent locking feature
- STEERING WHEEL AUDIO CONTROLS
- Steering wheel, leather-wrapped with audio and cruise controls
- Visors, driver and front passenger illuminated vanity mirrors
- Windows, power front and rear with driver express up and down and express down on all other windows

AutoDiary

Used 2018 Chevrolet Silverado 1500 4WD Crew Cab 143.5" LT w/1LT (#JJ)

Features (continued)

MECHANICAL

- Alternator, 150 amps
- Battery, heavy-duty 730 cold-cranking amps/70 Amp-hr, maintenance-free with rundown protection and retained accessory power
- Brakes, 4-wheel disc with DURALIFE rotors, 4-wheel antilock
- Capless Fuel Fill
- COOLING, EXTERNAL ENGINE OIL COOLER
- Exhaust, aluminized stainless-steel muffler and tailpipe
- Four wheel drive
- Frame, fully-boxed, hydroformed front section
- GVWR, 7100 lbs. (3221 kg) (Requires Crew Cab or Double Cab 4WD models and (LV3) 4.3L EcoTec3 V6 engine.)
- PICKUP BOX
- Rear axle, 3.42 ratio (Standard on 4WD (LV3) 4.3L EcoTec3 V6 engine. Available with (L83) 5.3L EcoTec3 V8 engine. Required with (PDE) LT eAssist Package on CK15543 Crew Cab models.)
- Steering, Electric Power Steering (EPS) assist, rack-and-pinion
- Transfer case, electronic Autotrac with rotary dial control (Included with 4WD models only.)

SAFETY

- Airbags, Dual-stage frontal airbags for driver and front outboard passenger; Seat-mounted side-impact airbags for driver and front outboard passenger; Head-curtain airbags for front and rear outboard seating positions; Includes front outboard Passenger Sensing System for frontal outboard passenger airbag (Always use safety belts and child restraints. Children are safer when properly secured in a rear seat in the appropriate child restraint. See the Owner's Manual for more information.)
- Chevrolet Connected Access with 10 years of standard connectivity which enables services such as, Vehicle Diagnostics, Dealer Maintenance Notification, Chevrolet Smart Driver, Marketplace and more; EFFECTIVE WITH SALES STARTING 5/1/2018. (Included and only available with (UE1) OnStar. Limitations apply. Not transferable. Standard connectivity available to original purchaser for ten years from the date of initial vehicle purchase for model year 2018 or newer Chevrolet vehicles. See onstar.com for details and further plan limitations. Connected Access does not include emergency or security servi
- Daytime running lamps with automatic exterior lamp control
- OnStar and Chevrolet connected services capable; EFFECTIVE WITH RETAIL SALES STARTING 5/1/2018. (Visit onstar.com for coverage map, details and system limitations. Services vary by model.)
- REAR VISION CAMERA
- StabiliTrak, stability control system with Proactive Roll Avoidance and traction control includes electronic trailer sway control and hill start assist

AutoDiary

Used 2018 Chevrolet Silverado 1500 4WD Crew Cab 143.5" LT w/1LT (#JJ)

Features (continued)

SAFETY

- Teen Driver mode a configurable feature that lets you activate customizable vehicle settings associated with a key fob, to encourage safe driving behavior. It can limit certain vehicle features, and it prevents certain safety systems from being turned off. An in-vehicle report gives you information on your teen's driving habits and helps you to continue to coach your new driver
- Tire Pressure Monitoring System with Tire Fill Alert (does not apply to spare tire)

Optional Equipment

- ENGINE, 5.3L ECOTEC3 V8 WITH A
- TRANSMISSION, 6-SPEED AUTOMATI
- 18" x 8.5" bright-machined alu
- PAINT, SOLID
- SEATS, FRONT 40/20/40 SPLIT-BE
- AUDIO SYSTEM, CHEVROLET MYLINK
- ALL STAR EDITION
- SEAT ADJUSTER, DRIVER 10-WAY P
- SEATING, HEATED DRIVER AND FRO
- STEERING COLUMN, MANUAL TILT A
- REMOTE VEHICLE STARTER SYSTEM
- AIR CONDITIONING, DUAL-ZONE AU
- DEFOGGER, REAR-WINDOW ELECTRIC
- POWER OUTLET, 110-VOLT AC
- LT PREFERRED EQUIPMENT GROUP
- EMISSIONS, FEDERAL REQUIREMENTS
- GVWR, 7200 lbs. (3266 kg)
- REAR AXLE, 3.42 RATIO
- TIRES, P265/65R18 ALL-TERRAIN, BLACKWALL
- COOLING, AUXILIARY EXTERNAL TRANSMISSION OIL COOLER
- TRAILER BRAKE CONTROLLER, INTEGRATED
- WHEEL, FULL-SIZE SPARE, 17" (43.2 CM) STEEL
- License plate kit, front
- THEFT-DETERRENT SYSTEM, UNAUTHORIZED ENTRY

AutoDiary

Used 2018 Chevrolet Silverado 1500 4WD Crew Cab 143.5" LT w/1LT (#JJ)

Technical Specifications

Basic

BASIC	Engine:	ENG,5.3L ECOTEC3 V8 W/ACTIVE FUEL MGMT,DIR INJECT/VAR VALVE TIMING
	Cylinders:	8
	Fuel Type:	Gas
	Transmission:	TRANS,6-SPD AUTO,ELEC CNTLLED
	Transmission Type:	Automatic
	Drive Type:	Four-wheel Drive

Chassis Specifications

BRAKES	ABS System:	4-Wheel
	Brake System Type:	Pwr
	Front disc brake (Yes/No):	Yes
	Front disc brake Rotor Diam x Thickness (in):	13.0 x 1.18
	Rear disc brake (Yes/No):	Yes
	Rear disc brake rotor diameter x thickness (in):	13.6 x 0.79
FUEL TANK	Capacity, Approx (gal):	26
	Tank Location:	- TBD -
STEERING	Curb to Curb Turns:	47.2
	Wall to Wall Turns:	N/A
	Ratio (:1), At Lock:	- TBD -
	Ratio (:1), On Center:	16.3
	Steering Type:	Electric Rack & Pinion

Technical Specifications

Chassis Specifications

SUSPENSION	Front Axel Type:	Independent
	Front axle Capacity (lb):	3950
	Front Shock Absorber Diameter (mm):	46
	Front Spring Capacity (lb):	3950
	Front Spring Type:	Independent
	Rear axle capacity (lb):	3950
	Rear axle type:	Semi-Floating
	Rear shock absorber diameter (mm):	35
	Rear spring capacity (lb):	3950
	Rear Spring Type:	2-Stage Multi-Leaf
	Stabilizer Bar Diameter (in):	1.35
TIRES	Front Capacity - each (lb):	- TBD -
	Front Tire Order Code:	RBZ
	Front Tire Revolutions/Mile @ 45 mph:	N/A
	Front Tire Size:	P255/70R17
	Rear tire capacity (lb):	- TBD -
	Rear tire order code:	RBZ
	Rear tire revolutions @ 45 mph:	N/A
	Rear tire size:	P255/70R17
	Spare tire capacity (lb):	- TBD -
	Spare tire order code:	ZBZ
	Spare tire revolutions @ 45 mph:	N/A
	Spare tire size:	P255/70R17

AutoDiary

Used 2018 Chevrolet Silverado 1500 4WD Crew Cab 143.5" LT w/1LT (#JJ)

Technical Specifications

Chassis Specifications

WHEELS	Front wheel Size (in):	17 x 8.0
	Front wheel Type:	Aluminum
	Rear wheel size (in):	17 x 8.0
	Rear wheel type:	Aluminum
	Spare wheel size (in):	17 x 7.0
	Spare wheel type:	Aluminum

Dimension Specifications

CARGO AREA DIMENSIONS	Cargo Volume (cu ft):	53.4
	Ext'd Cab Cargo Volume (cu ft):	- TBD -
	Height (in):	21.10
	Length @ Floor (in):	69.33
	Tailgate Width (in):	62.2
	Width @ Floor (in):	64.6
	Width @ Top, Rear (in):	- TBD -
	Width @ Wheelhousings (in):	51.03

AutoDiary

Used 2018 Chevrolet Silverado 1500 4WD Crew Cab 143.5" LT w/1LT (#JJ)

Technical Specifications

Dimension Specifications

EXTERIOR DIMENSIONS	Cab to Axle (in):	31.97
	Cab to End of Frame (in):	- TBD -
	Frame Width, Rear (in):	- TBD -
	Front Bumper to Back of Cab (in):	150.90
	Ground Clearance (in), Front:	8.93
	Ground Clearance (in), Rear:	8.93
	Ground to Top of Frame (in):	- TBD -
	Ground to Top of Load Floor (in):	34.3
	Height, Overall (in):	73.97
	Length, Overall w/o rear bumper:	230.03
	Overhang (in), Front:	- TBD -
	Overhang (in), Rear w/o bumper:	- TBD -
	Wheelbase (in):	143.5
	Width, Max w/o mirrors (in):	80.0
INTERIOR DIMENSIONS	Front seat Head Room (in):	42.80
	Front seat Hip Room (in):	60.73
	Front seat Leg Room (in):	45.27
	Front seat Shoulder Room (in):	66.03
	Passenger Capacity:	6
	Second seat head room (in):	40.50
	Second seat hip room (in):	60.27
	Second seat leg room (in):	40.93
	Second seat shoulder room (in):	65.73

Technical Specifications

Payload/Trailering Specifications

TRAILERING	Dead Weight Hitch (lb):	5000
	Dead Weight Hitch-Max. Tongue Load:	500
	Fifth Wheel Hitch (lb):	- TBD -
	Fifth wheel hitch-Max. Tongue Load:	- TBD -
	Wt Distributing Hitch (lb):	7000
	Wt. Distributing Hitch-Max. Tongue Load:	700
WEIGHT INFORMATION	Curb Weight (lb):	- TBD -
	Gross Axle Wt Rating (lb):	3950
	Gross Combined Wt Rating (lb):	12800
	Gross Vehicle Wt Rating (lb):	7100
	Rear Curb Weight (lb):	- TBD -
	Rear Gross Axle Weight Rating (lb):	3950

Powertrain - Advanced Specifications

COOLING SYSTEM	Engine Oil Cooler:	Yes
DIFFERENTIAL	Front Axel Ratio (:1):	3.42
	Rear axle ratio (:1):	3.42
ELECTRICAL	1st battery Cold Cranking Amps @ 0° F:	730
TRANSFER CASE	Gear Ratio (:1), High:	1.00
	Gear Ratio (:1), Low:	2.69
	Transfer Case Model:	Magna MP3023/4

AutoDiary

Used 2018 Chevrolet Silverado 1500 4WD Crew Cab 143.5" LT w/1LT (#JJ)

Technical Specifications

Powertrain - Advanced Specifications

TRANSMISSION	Gear Ratio (:1), Fifth:	0.85
	Gear Ratio (:1), First:	4.03
	Gear Ratio (:1), Fourth:	1.15
	Gear Ratio (:1), Reverse:	3.06
	Gear Ratio (:1), Second:	2.36
	Gear Ratio (:1), Sixth:	0.67
	Gear Ratio (:1), Third:	1.53

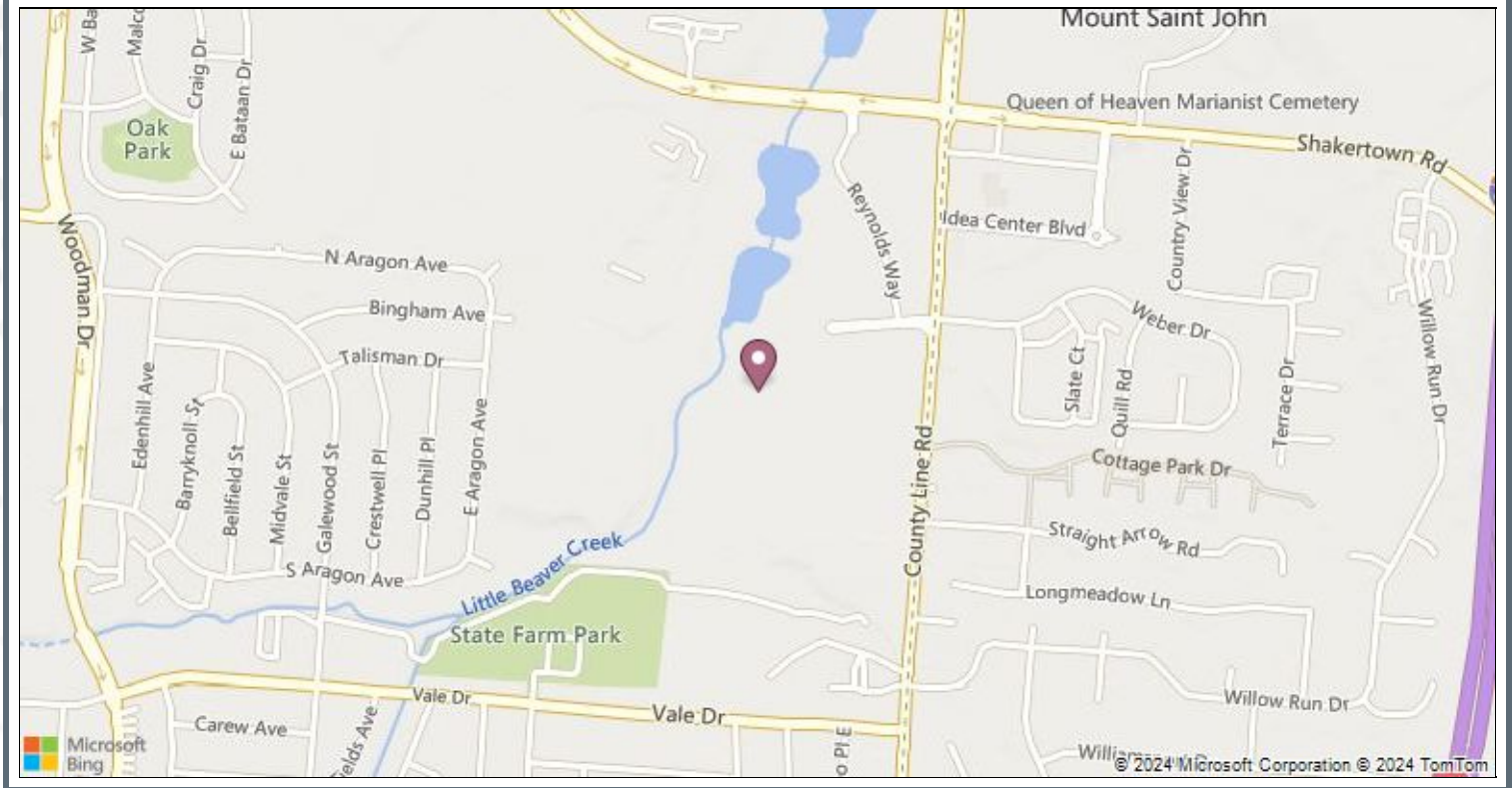
Powertrain - Basic Specifications

FUEL ECONOMY	City EPA Fuel Economy Est (MPG):	17
	Fuel Economy Est-Combined (MPG):	19
	Hwy EPA Fuel Economy Estimate (MPG):	22
TRANSMISSION	Transmission Order Code:	MYC
	Transmission Type:	6
	Transmission Type Description Line 1:	Automatic

AutoDiary

Used 2018 Chevrolet Silverado 1500 4WD Crew Cab 143.5" LT w/1LT (#JJ)

Dealer Map



Prepared 4/18/2024

Page 13 of 13



Reynolds Motors
One Reynolds Way
Dayton, OH 45430

Bill McCarty
William_McCarty@ReyRey.com
(800) 767-0080
(888) 490-1571
www.nakedlimemotors.com