

### Vehicle Details



**Stock #**XU119147**VIN**2G1105S38J9119147**Year**2018**Stock Type**Used**Make**Chevrolet**Model**Impala**Style**4dr Sdn LT w/1LT

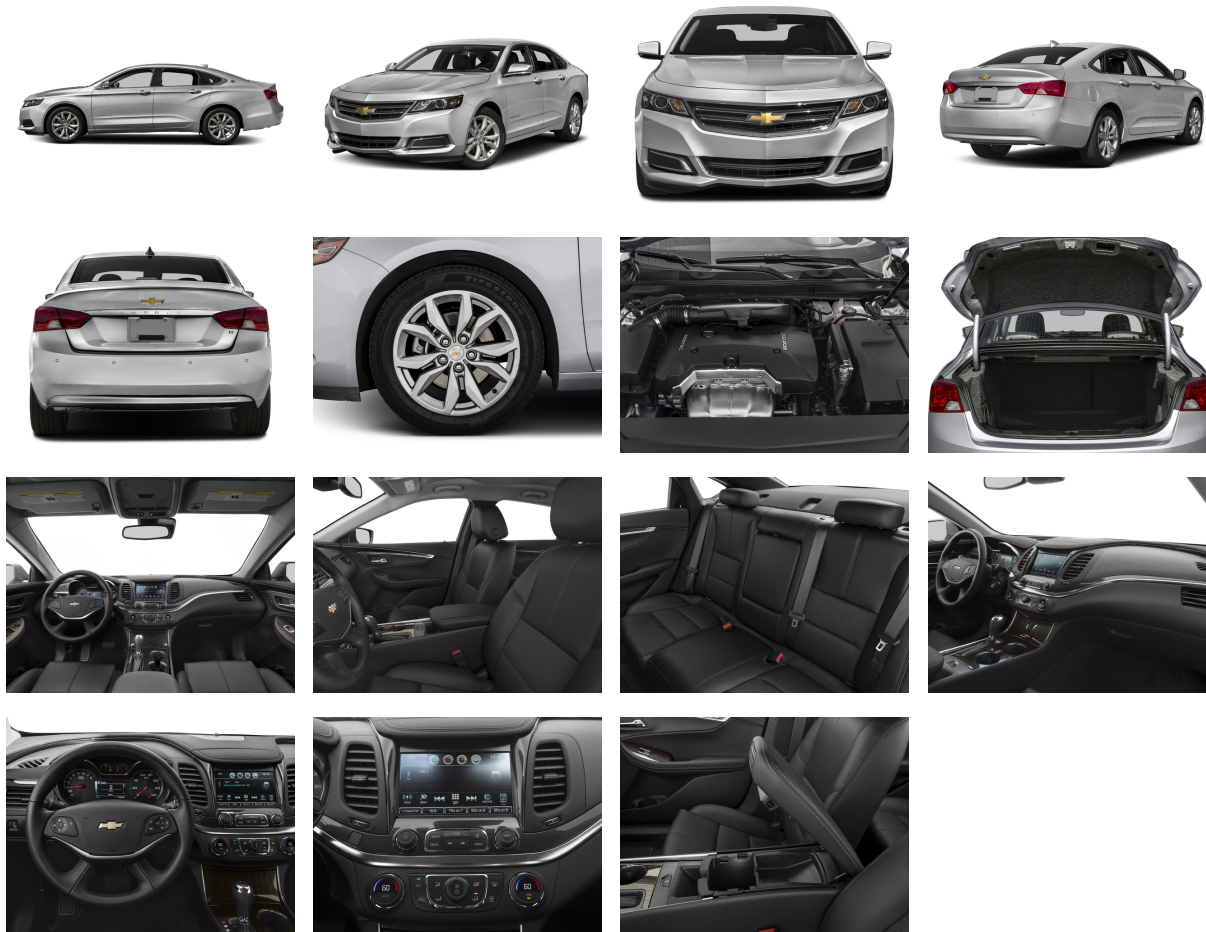
### Disclaimer

Sales Tax, Title Fee, License & Registration Fees, Dealer Documentary Fee, Finance Charges, Emission Testing Fees and / or Compliances Fees are in addition to the advertised price. Prices and special offers are subject to change. Mileage listings are estimates and are not necessarily accurate odometer readings.

# AutoDiary

Used 2018 Chevrolet Impala 4dr Sdn LT w/1LT (#XU119147)

## Photos



## Features

### Standard Equipment

#### ENTERTAINMENT

- Audio system feature, 6-speaker system 100-watt
- Audio system feature, 8" diagonal color infotainment display, touch-screen, motorized power up/down with hidden storage and valet password lock
- Audio system feature, USB port, located behind radio touch-screen
- Audio system feature, USB port, located in console

Prepared 4/26/2024

Page 2 of 10



**Reynolds Motors**  
One Reynolds Way  
Dayton, OH 45430

**Bill McCarty**  
William\_McCarty@ReyRey.com  
(800) 767-0080  
(888) 490-1571  
www.nakedlimemotors.com

# AutoDiary

## Used 2018 Chevrolet Impala 4dr Sdn LT w/1LT (#XU119147)

### Features (continued)

#### ENTERTAINMENT

- Audio system, Chevrolet MyLink Radio with 8" diagonal color touch-screen, AM/FM stereo with seek-and-scan and digital clock, includes Bluetooth streaming audio for music and select phones; voice-activated technology for radio and phone; featuring Android Auto and Apple CarPlay capability for compatible phone and Shop with the ability to browse, select and install apps to your vehicle. Apps include Pandora, iHeartRadio, The Weather Channel and more
- Bluetooth for phone, streaming audio for music for select phones
- Chevrolet 4G LTE and available built-in Wi-Fi hotspot offers a fast and reliable Internet connection for up to 7 devices; includes data trial for 1 month or 3GB (whichever comes first) EFFECTIVE WITH RETAIL SALES STARTING 5/1/2018 (Available Wi-Fi requires compatible mobile device, active OnStar service and data plan. Data plans provided by AT&T. Visit onstar.com for details and system limitations.)
- SiriusXM Satellite Radio is standard on nearly all 2018 GM models. Enjoy a 3-month All Access trial subscription with over 150 channels including commercial-free music, plus sports, news and entertainment. Plus listening on the app and online is included, so you'll hear the best SiriusXM has to offer, anywhere life takes you. Welcome to the world of SiriusXM. (IMPORTANT: The SiriusXM Satellite Radio trial package is not provided on vehicles that are ordered for Fleet Daily Rental ("FDR") use. If you decide to continue service after your trial, the subscription plan you choose will automatically
- Steering wheel controls, mounted audio and cruise controls

#### EXTERIOR

- Door handles, body-color
- Glass, acoustic, laminated front-side and windshield
- Headlamp control, automatic on and off
- Headlamps, halogen
- Mirrors, outside heated power-adjustable manual-folding with integrated turn signal indicators and ground illumination (Body-color mirror caps.)
- Tire, compact spare, T125/70R17
- TIRES, P235/50R18 ALL-SEASON, BLACKWALL
- Wheel, compact spare, 17" (43.2 cm) steel
- WHEELS, 18" (45.7 CM) PAINTED ALLOY
- Wipers, front intermittent

#### INTERIOR

- Air conditioning, dual-zone automatic climate control with individual climate settings for driver and front passenger

### Features (continued)

#### INTERIOR

- Armrest, rear center
- Assist handles, driver, front passenger and rear outboard
- Brake, park, electronic push button powered located on instrument panel left of steering wheel
- Compass display, located in the Driver Information Center
- Cruise control, electronic with set and resume speed
- Defogger, rear-window
- Driver Information Center, color display includes trip/fuel information, vehicle information and vehicle messages
- Floor mats, carpeted front
- Floor mats, carpeted rear
- Head restraints, 4-way adjustable, up/down, fore/aft, front
- Head restraints, rear, adjustable, folding
- Instrumentation, analog with speedometer, tachometer, engine temperature and fuel gauge with color Driver Information Center
- KEYLESS OPEN
- Keyless start
- Lighting, interior with theater dimming, delayed entry/exit, glovebox and trunk
- Map pockets, driver and front passenger seatbacks
- Mirror, inside rearview manual day/night
- Power outlet, 1, auxiliary, 12-volt located inside console
- Power outlet, auxiliary, 12-volt located on rear of console
- REMOTE VEHICLE STARTER SYSTEM
- SEAT ADJUSTER, DRIVER 8-WAY POWER
- SEAT ADJUSTER, DRIVER POWER LUMBAR
- Seat adjuster, front passenger power lumbar
- Seat adjuster, front passenger, 4-way manual
- Seat trim, premium cloth/leatherette
- Seat, rear 60/40 split-folding
- SEATS, FRONT BUCKET
- SHIFT KNOB, LEATHER-WRAPPED
- Steering column, manual tilt and telescopic
- Steering wheel, 4-spoke leather-wrapped
- Storage compartment, front, uplevel with cover
- Storage, innovative, hidden behind 8" diagonal touch screen with valet-mode lockable, dedicated umbrella storage in front door and hidden storage in trunk
- Theft-deterrent system
- Trunk opening touch pad



### Features (continued)

#### INTERIOR

- Trunk release, power located inside on instrument panel left of steering wheel
- Vent, rear console, air
- Visors, driver and front passenger illuminated vanity mirrors
- Window, power with driver Express-Up and Down
- Windows, power with Express-Down on all

#### MECHANICAL

- Alternator, 150 amps
- Axle, 3.23 final drive ratio (Included and only available with (LCV) 2.5L engine.)
- Battery, 800 cold-cranking amps (Included and only available with (LCV) 2.5L engine.)
- Brake lining, high-performance, noise and dust performance with FNC rotors
- BRAKES, 4-WHEEL ANTILOCK, 4-WHEEL DISC
- Chassis equipment, front strut assembly
- Engine control, stop-start system (Included and only available with (LCV) 2.5L engine.)
- Exhaust, single-outlet stainless-steel with hidden, turned-down tip
- Front wheel drive
- Hill start assist
- Steering, power, variable assist, electric
- Suspension, rear 4-link

#### SAFETY

- Air bags, 10 total, frontal and knee for driver and front passenger, side-impact seat-mounted and roof rail for front and rear outboard seating positions includes Passenger Sensing System (Always use safety belts and child restraints. Children are safer when properly secured in a rear seat in the appropriate child restraint. See the Owner's Manual for more information.)
- Brake Assist, panic
- Brake control, cornering

# AutoDiary

Used 2018 Chevrolet Impala 4dr Sdn LT w/1LT (#XU119147)

## Features (continued)

### SAFETY

- Chevrolet Connected Access with 10 years of standard connectivity which enables services such as, Vehicle Diagnostics, Dealer Maintenance Notification, Chevrolet Smart Driver, Marketplace and more EFFECTIVE WITH SALES STARTING 5/1/2018 (Limitations apply. Not transferable. Standard connectivity available to original purchaser for ten years from the date of initial vehicle purchase for model year 2018 or newer Chevrolet vehicles. See onstar.com for details and further plan limitations. Connected Access does not include emergency or security services. Availability and additional services enabled
- Daytime Running Lamps, upper and lower auxiliary, LED
- Door and window locks, rear child security, power
- LATCH system (Lower Anchors and Top tethers for CHildren) for child safety seats
- OnStar and Chevrolet connected services capable EFFECTIVE WITH RETAIL SALES STARTING 5/1/2018 (Visit onstar.com for coverage map, details and system limitations. Services vary by model.)
- REAR VISION CAMERA
- Safety belt pretensioners, driver and front passenger
- Safety belts, 3-point, all positions
- STABILITRAK, STABILITY CONTROL SYSTEM
- TOOL KIT, ROAD EMERGENCY
- TRACTION CONTROL

## Technical Specifications

### Basic

BASIC	Engine:	ENG,3.6L DOHC V6 DI W/VVT
	Cylinders:	4
	Fuel Type:	Gas
	Transmission:	Transmission-Auto
	Transmission Type:	Automatic
	Drive Type:	Front-wheel Drive

# AutoDiary

Used 2018 Chevrolet Impala 4dr Sdn LT w/1LT (#XU119147)

## Technical Specifications (continued)

### Chassis Specifications

BRAKES	ABS System:	4-Wheel
	Brake System Type:	Pwr
	Front disc brake (Yes/No):	Yes
	Front disk brake Rotor Diam x Thickness (in):	12.6 x 1.2
	Rear disc brake (Yes/No):	Yes
	Rear disc brake rotor diameter x thickness (in):	12.4 x 0.9
FUEL TANK	Capacity, Approx (gal):	18.5
STEERING	Curb to Curb Turns:	38.8
	Wall to Wall Turns:	- TBD -
	Lock to Lock Turns:	2.73
	Ratio (:1), Overall:	15.2
	Steering Type:	Electric Rack & Pinion
SUSPENSION	Front Shock Absorber Diameter (mm):	N/A
	Front Suspension Type:	MacPherson Strut
	Rear shock absorber diameter (mm):	N/A
	Rear stabilizer bar diameter (in):	- TBD -
	Rear suspension type line 1:	Multi-Link
	Rear suspension type line 2:	w/Coil Springs
	Stabilizer Bar Diameter (in):	1.1
TIRES	Front Tire Order Code:	QGK
	Front Tire Size:	P235/50R18
	Rear tire order code:	QGK
	Rear tire size:	P235/50R18
	Spare tire order code:	QCL
	Spare tire size:	T125/70R17

### Technical Specifications (continued)

#### Chassis Specifications

WHEELS	Front wheel Size (in):	18 x - TBD -
	Front wheel Type:	Aluminum
	Rear wheel size (in):	18 x - TBD -
	Rear wheel type:	Aluminum
	Spare wheel size (in):	17 x - TBD -
	Spare wheel type:	Steel

#### Dimension Specifications

CARGO AREA DIMENSIONS	Liftover Height (in):	- TBD -
	Trunk Volume (cu ft):	18.8
EXTERIOR DIMENSIONS	Height, Overall (in):	58.90
	Length, Overall (in):	201.30
	Min Ground Clearance (in):	- TBD -
	Tread Width (in), Front:	62.20
	Tread Width (in), Rear:	62.00
	Wheelbase (in):	111.70
	Width, Max w/o mirrors (in):	73.00
INTERIOR DIMENSIONS	EPA Classification:	Large Cars
	Front seat Head Room (in):	39.90
	Front seat Hip Room (in):	54.90
	Front seat Leg Room (in):	45.80
	Front seat Shoulder Room (in):	57.90
	Passenger Capacity:	5
	Passenger Volume (cu ft):	105
	Second seat head room (in):	37.40
	Second seat hip room (in):	54.10
	Second seat leg room (in):	39.80
	Second seat shoulder room (in):	56.90



# AutoDiary

Used 2018 Chevrolet Impala 4dr Sdn LT w/1LT (#XU119147)

## Technical Specifications (continued)

### Payload/Trailering Specifications

TRAILERING	Dead Weight Hitch (lb):	1000
	Dead Weight Hitch-Max. Tongue Load:	100
	Wt Distributing Hitch (lb):	1000
	Wt. Distributing Hitch-Max. Tongue Load:	100
WEIGHT INFORMATION	Base Curb Weight (lb):	3702

### Powertrain - Advanced Specifications

ELECTRICAL	1st battery Cold Cranking Amps @ 0° F:	800
------------	--	-----

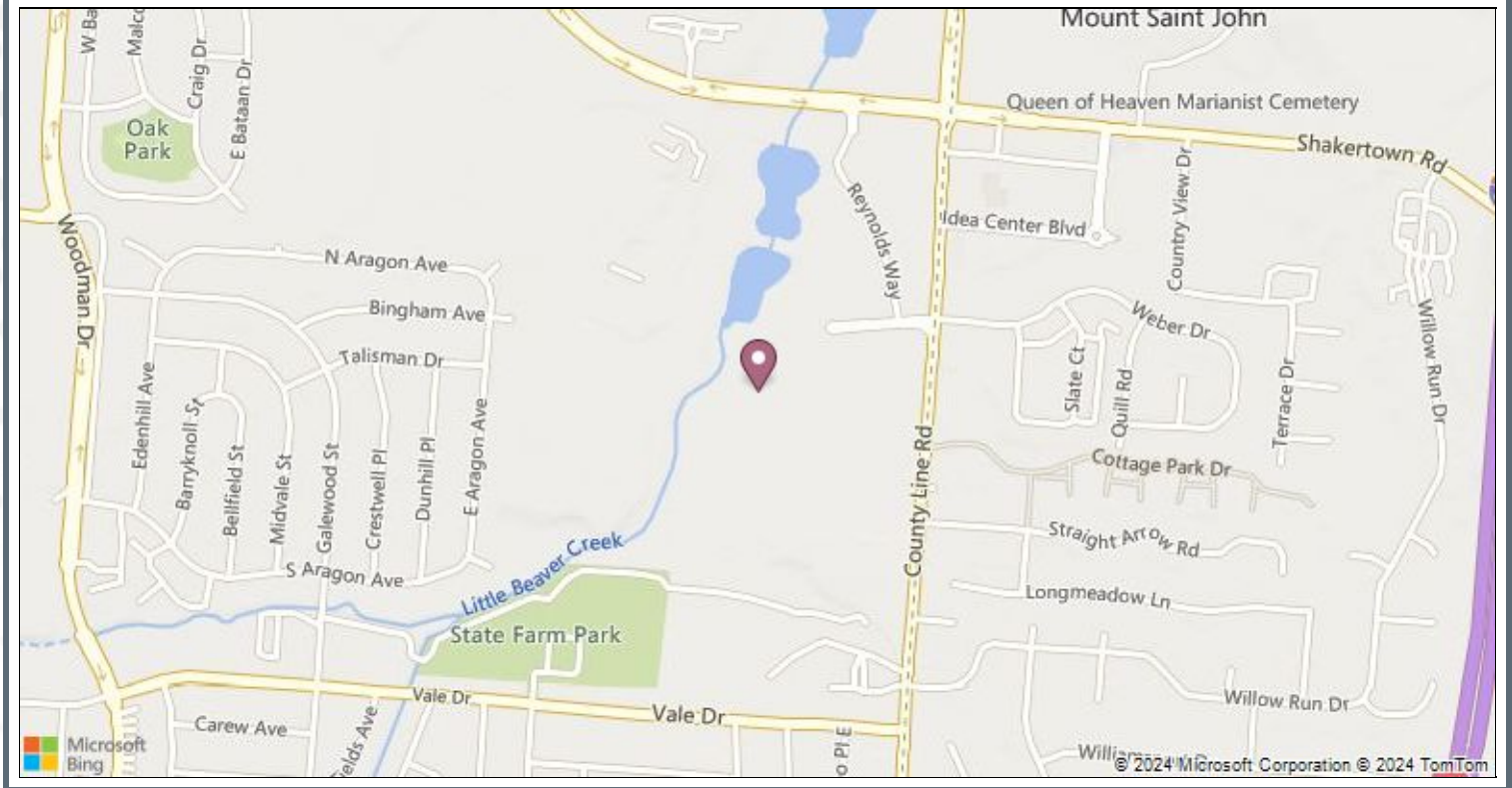
### Powertrain - Basic Specifications

ENGINE	Displacement:	3.6L/217
	Engine Order Code:	LFX
	Engine Type:	Gas/Ethanol V6
	SAE Net Horsepower:	305 @ 6800
	SAE Net Torque (lb ft):	264 @ 5200
FUEL ECONOMY	City EPA Fuel Economy Est (MPG):	22
	Fuel Economy Est-Combined (MPG):	25
	Hwy EPA Fuel Economy Estimate (MPG):	30

# AutoDiary

Used 2018 Chevrolet Impala 4dr Sdn LT w/1LT (#XU119147)

## Dealer Map



Prepared 4/26/2024

Page 10 of 10



**Reynolds Motors**  
One Reynolds Way  
Dayton, OH 45430

**Bill McCarty**  
William\_McCarty@ReyRey.com  
(800) 767-0080  
(888) 490-1571  
[www.nakedlimomotors.com](http://www.nakedlimomotors.com)