

Vehicle Details



Stock #AV270021**VIN**1C4HJXCG2KW604585**Year**2019**Stock Type**Used**Make**Jeep**Model**Wrangler**Style**Rubicon 4x4**Exterior Color**Hellayella Clearcoat**Interior Color**Black**Published Price**\$35,400.00

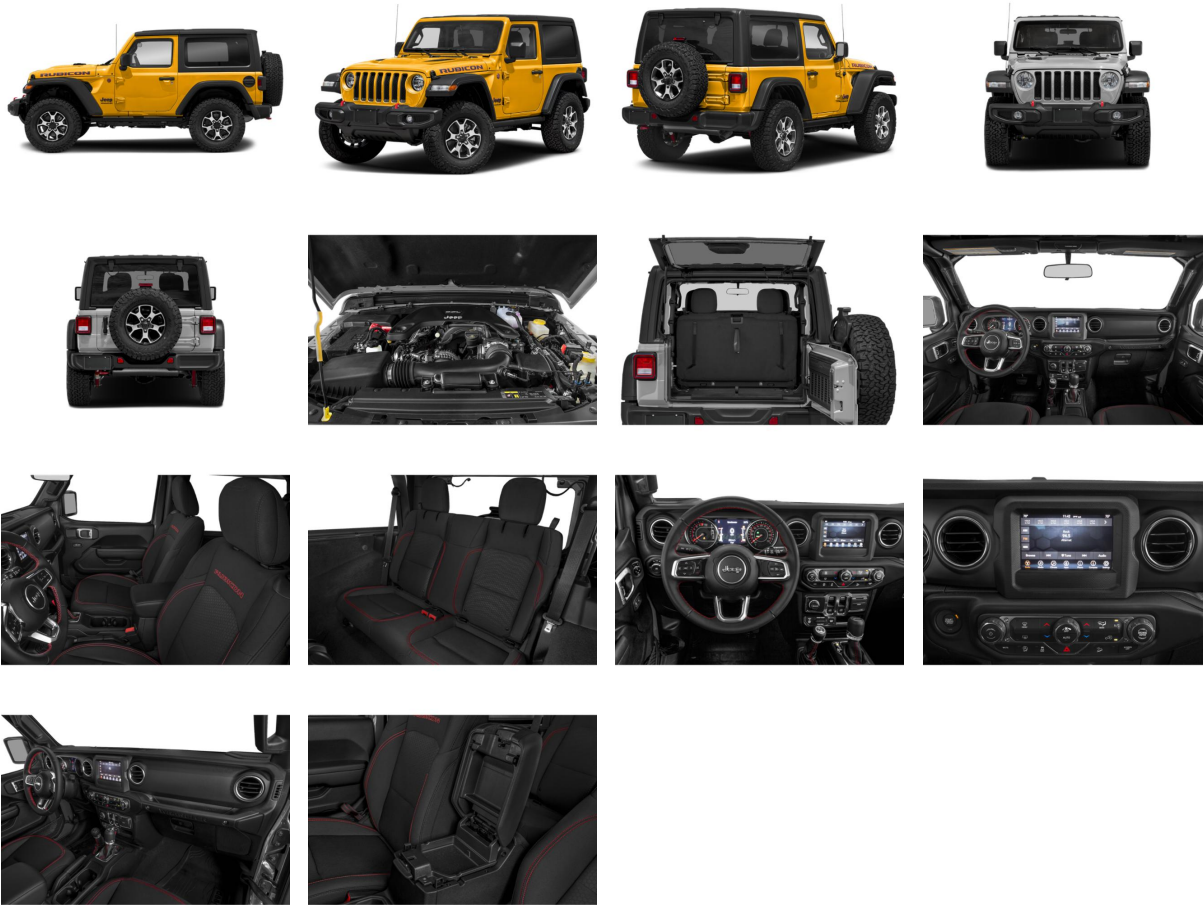
Disclaimer

Sales Tax, Title Fee, License & Registration Fees, Dealer Documentary Fee, Finance Charges, Emission Testing Fees and / or Compliances Fees are in addition to the advertised price. Prices and special offers are subject to change. Mileage listings are estimates and are not necessarily accurate odometer readings.

AutoDiary

Used 2019 Jeep Wrangler Rubicon 4x4 (#AV270021)

Photos



Features

Standard Equipment

ENTERTAINMENT

- 2 LCD Monitors In The Front
- 8 Speakers
- Fixed antenna
- Radio w/Seek-Scan, Clock, Speed Compensated Volume Control, Aux Audio Input Jack, Steering Wheel Controls, Voice Activation, Radio Data System and Uconnect External Memory Control
- RADIO: UCONNECT 4 W/7" DISPLAY
- Streaming Audio

Prepared 5/8/2024

Page 2 of 12



Reynolds Motors
One Reynolds Way
Dayton, OH 45430

Bill McCarty
William_McCarty@ReyRey.com
(800) 767-0080
(888) 490-1571
www.nakedlimomotors.com

Features (continued)

EXTERIOR

- ALUMINUM SPARE WHEEL
- Auto On/Off Aero-Composite Halogen Daytime Running Headlamps w/Delay-Off
- Black door handles
- Black Front Bumper w/2 Tow Hooks
- Black Power Heated Side Mirrors w/Manual Folding
- Black Rear Bumper w/1 Tow Hook
- Black Side Windows Trim
- Black Wheel Well Trim and Black Fender Flares
- Body-Color Grille w/Colored Accents
- Clearcoat Paint w/Badging
- DEEP TINTED GLASS
- FRONT FOG LAMPS
- Full-Size Spare Tire Mounted Outside Rear
- Galvanized Steel/Aluminum/Magnesium Panels
- Manual Convertible Top w/Fixed Roll-Over Protection and Top
- Non-Lock Fuel Cap w/o Discriminator
- Removable Rear Window
- Swing-Out Rear Cargo Access
- Tailgate/Rear Door Lock Included w/Power Door Locks
- Tires: LT285/70R17C BSW Off-Road
- Variable intermittent wipers
- WHEELS: 17" X 7.5" MACHINED W/BLACK POCKETS

INTERIOR

- 2 12V DC Power Outlets
- 2 12V DC Power Outlets and 1 120V AC Power Outlet
- 2 Seatback Storage Pockets
- 4-Way Passenger Seat -inc: Manual Recline, Fore/Aft Movement and Manual Rear Seat Easy Entry
- 6-Way Driver Seat -inc: Manual Recline, Height Adjustment, Fore/Aft Movement, Manual Lumbar Support and Manual Rear Seat Easy Entry
- Air filtration
- Analog Appearance
- Cargo Space Lights
- Carpet Floor Trim, Carpet And Rubber Mat

AutoDiary

Used 2019 Jeep Wrangler Rubicon 4x4 (#AV270021)

Features (continued)

INTERIOR

- Compass
- Cruise control w/steering wheel controls
- Day-night rearview mirror
- Delayed Accessory Power
- Driver And Passenger Visor Vanity Mirrors w/Driver And Passenger Illumination
- DRIVER INFORMATION CENTER
- Fade-to-off interior lighting
- Front And Rear Map Lights
- Front center armrest w/storage
- Front Seats w/Cloth Back Material and Manual Driver Lumbar
- Full Carpet Floor Covering -inc: Carpet Front Floor Mats
- Full Floor Console w/Locking Storage, 2 12V DC Power Outlets and 1 120V AC Power Outlet
- Garage Door Transmitter
- Gauges -inc: Speedometer, Odometer, Voltmeter, Oil Pressure, Engine Coolant Temp, Tachometer, Engine Hour Meter, Trip Odometer and Trip Computer
- HVAC -inc: Console Ducts
- Illuminated Front Cupholder
- Illuminated rear cupholder
- Instrument Panel Bin, Dashboard Storage, Driver And Passenger Door Bins
- Interior Trim -inc: Colored Instrument Panel Insert, Metal-Look Door Panel Insert, Metal-Look Console Insert and Metal-Look Interior Accents
- LEATHER STEERING WHEEL
- Locking Cargo Area Concealed Storage
- Locking glove box
- Manual Adjustable Front Head Restraints and Foldable Rear Head Restraints
- Manual tilt/telescoping steering column
- Outside temp gauge
- PERIMETER ALARM
- Power 1st Row Windows w/Driver And Passenger 1-Touch Down
- Power Door Locks w/Autolock Feature
- PREMIUM CLOTH LOW-BACK BUCKET SEATS
- Proximity Key For Push Button Start Only
- Redundant digital speedometer
- Remote Keyless Entry w/Integrated Key Transmitter, Illuminated Entry and Panic Button
- Removable Full Folding Bench Front Facing Tumble Forward Premium Cloth Rear Seat
- Removable Rear Windows

AutoDiary

Used 2019 Jeep Wrangler Rubicon 4x4 (#AV270021)

Features (continued)

INTERIOR

- Sentry Key Immobilizer
- Smart Device Integration
- TRIP COMPUTER
- Urethane Gear Shifter Material
- Voice Activated Dual Zone Front Automatic Air Conditioning

MECHANICAL

- 17.5 Gal. Fuel Tank
- 220 AMP ALTERNATOR
- 4-Wheel Disc Brakes w/4-Wheel ABS, Front Vented Discs, Brake Assist and Hill Hold Control
- 4.10 REAR AXLE RATIO
- 5 Skid Plates
- 50 STATE EMISSIONS
- 650CCA Maintenance-Free Battery w/Run Down Protection
- AUTO LOCKING HUBS
- Brake Actuated Limited Slip Differential
- Driver Selectable Front Locking Differential
- Driver Selectable Rear Locking Differential
- Electro-Hydraulic Power Assist Steering
- Engine Auto Stop-Start Feature
- ENGINE OIL COOLER
- Front Active w/Driver Control Anti-Roll Bar and Rear Anti-Roll Bar
- GVWR: 5,250 lbs
- HD shock absorbers
- Leading Link Front Suspension w/Coil Springs
- Manual Transfer Case
- Part-Time Four-Wheel Drive
- Performance suspension
- Single stainless steel exhaust
- Solid Axle Rear Suspension w/Coil Springs
- Towing Equipment -inc: Trailer Sway Control

AutoDiary

Used 2019 Jeep Wrangler Rubicon 4x4 (#AV270021)

Features (continued)

SAFETY

- ABS And Driveline Traction Control
- Airbag Occupancy Sensor
- Dual Stage Driver And Passenger Front Airbags
- Dual Stage Driver And Passenger Seat-Mounted Side Airbags
- Electronic Stability Control (ESC) And Roll Stability Control (RSC)
- Outboard Front Lap And Shoulder Safety Belts -inc: Height Adjusters and Pretensioners
- ParkView back-up camera
- Side Impact Beams
- Tire Specific Low Tire Pressure Warning

Optional Equipment

- ENGINE: 3.6L V6 24V VVT UPG I
- TIRES: LT285/70R17C BSW OFF-RO
- GVWR: 5,250 LBS
- PINSTRIPE
- TRANSMISSION: 8-SPEED AUTOMATIC (850RE) - -inc: TIP Start, Hill Descent Control
- WHEELS: 17" X 7.5" POLISHED W/BLACK POCKETS
- BLACK, LEATHER TRIMMED BUCKET SEATS - -inc: Leather Wrapped Park Brake Handle, Leather Wrapped Shift Knob, Premium Door Trim Panel
- 8.4" RADIO & PREMIUM AUDIO GROUP - -inc: SiriusXM Traffic Plus, Alpine Premium Audio System, HD Radio, Radio: Uconnect 4C Nav w/8.4" Display, Rear View Auto Dim Mirror, For Details, Visit DriveUconnect.ca, 1-YR SiriusXM Guardian Trial, 5-Year SiriusXM Travel Link Service, GPS Navigation, 5-Year SiriusXM Traffic Service, SiriusXM Travel Link, 4G LTE Wi-Fi Hot Spot, Emergency/Assistance Call, 8.4" Touchscreen Display
- LED LIGHTING GROUP - -inc: Daytime Running Lamps LED Accents, Front LED Fog Lamps, LED Reflector Headlamps, LED Taillamps
- STEEL BUMPER GROUP - -inc: Steel Front Bumper, Steel Rear Bumper
- ADVANCED SAFETY GROUP - -inc: Advanced Brake Assist, Full Speed Forward Collision Warning Plus
- CARGO GROUP W/TRAIL RAIL SYSTEM - -inc: Cargo Compartment Floor Mat
- SAFETY GROUP - -inc: ParkSense Rear Park Assist System, Blind Spot & Cross Path Detection
- BODY COLOR 3-PIECE HARD TOP - -inc: Freedom Panel Storage Bag, Rear Window Defroster, Rear Window Wiper/Washer, No Soft Top
- Body color fender flares
- RADIO: UCONNECT 4C NAV W/8.4" DISPLAY
- ALPINE PREMIUM AUDIO SYSTEM
- REMOTE PROXIMITY KEYLESS ENTRY

AutoDiary

Used 2019 Jeep Wrangler Rubicon 4x4 (#AV270021)

Features (continued)

Optional Equipment

- Remote start system
- QUICK ORDER PACKAGE 24R - -inc: Engine: 3.6L V6 24V VVT UPG I w/ESS, Transmission: 8-Speed Automatic (850RE)
- QUICK ORDER PACKAGE 24R - -inc: Engine: 3.6L V6 24V VVT UPG I w/ESS, Transmission: 8-Speed Automatic (850RE)

Technical Specifications

Basic

BASIC	Engine:	E: 3.6L V6 24V VVT UPG I W/ESS
	Cylinders:	6
	Fuel Type:	Gas
	Transmission:	TRANS: 8-SPD AUTO (850RE)
	Transmission Type:	Automatic
	Drive Type:	Four-wheel Drive

Chassis Specifications

BRAKES	ABS System:	4-Wheel
	ABS System (Second Line):	4-Wheel
	Brake System Type:	4-Wheel Disc
	Front disc brake (Yes/No):	Yes
	Front disk brake Rotor Diam x Thickness (in):	12.9
	Rear disc brake (Yes/No):	Yes
	Rear disc brake rotor diameter x thickness (in):	13.4
FUEL TANK	Capacity, Approx (gal):	17.5
STEERING	Curb to Curb Turns:	34.5
	Steering Type:	Re-Circulating Ball

Technical Specifications (continued)

Chassis Specifications

SUSPENSION	Front Axel Type:	Non-Independent
	Front Spring Type:	Leading Link
	Rear axle type:	Rigid Axle
	Rear Spring Type:	Trailing Arm
TIRES	Front Tire Order Code:	TXA
	Front Tire Size:	LT285/70SR17
	Rear tire order code:	TXA
	Rear tire size:	LT285/70SR17
	Spare tire size:	Full-Size
WHEELS	Front wheel Size (in):	17 X 7.5
	Front wheel Type:	Aluminum
	Rear wheel size (in):	17 X 7.5
	Rear wheel type:	Aluminum
	Spare wheel size (in):	Full-Size
	Spare wheel type:	Aluminum

Dimension Specifications

CARGO AREA DIMENSIONS	Cargo Volume (cu ft) to Seat 1:	31.7
	Cargo Volume (cu ft) to Seat 2:	12.9
	Cargo Volume (cu ft) to Seat 3:	12.9
	Liftover Height (in):	30
EXTERIOR DIMENSIONS	Height, Overall (in):	73.6
	Length, Overall (in):	166.8
	Min Ground Clearance (in):	10.8
	Tread Width (in), Front:	62.9
	Tread Width (in), Rear:	62.9
	Wheelbase (in):	96.8
	Width, Max w/o mirrors (in):	73.8

AutoDiary

Used 2019 Jeep Wrangler Rubicon 4x4 (#AV270021)

Technical Specifications (continued)

Dimension Specifications

INTERIOR DIMENSIONS	Front seat Head Room (in):	42.6
	Front seat Hip Room (in):	53.9
	Front seat Leg Room (in):	41.2
	Front seat Shoulder Room (in):	55.7
	Passenger Capacity:	4
	Second seat head room (in):	41.7
	Second seat hip room (in):	45
	Second seat leg room (in):	35.7
	Second seat shoulder room (in):	57.7

Payload/Trailer Specifications

TRAILERING	Dead Weight Hitch (lb):	2000
	Dead Weight Hitch-Max. Tongue Load:	200
	Wt Distributing Hitch (lb):	2000
	Wt. Distributing Hitch-Max. Tongue Load:	200
WEIGHT INFORMATION	Base Curb Weight (lb):	4160
	Gross Combined Wt Rating (lb):	8016
	Gross Vehicle Wt Rating (lb):	5250

Powertrain - Advanced Specifications

COOLING SYSTEM	Engine Oil Cooler:	Regular Duty
DIFFERENTIAL	Front Axel Ratio (:1):	4.10
	Rear axle ratio (:1):	4.10
ELECTRICAL	1st battery Cold Cranking Amps @ 0° F:	650
	2nd battery cold cranking amps @ 0 F:	650
TRANSFER CASE	Transfer Case Model:	Manual
	Transfer Case Power Take Off:	No

Prepared 5/8/2024

Page 9 of 12



Reynolds Motors
One Reynolds Way
Dayton, OH 45430

Bill McCarty
William_McCarty@ReyRey.com
(800) 767-0080
(888) 490-1571
www.nakedlimemotors.com

Technical Specifications (continued)

Powertrain - Advanced Specifications

TRANSMISSION	Gear Ratio (:1), Fifth:	1.28
	Gear Ratio (:1), First:	4.71
	Gear Ratio (:1), Fourth:	1.67
	Gear Ratio (:1), Reverse:	3.29
	Gear Ratio (:1), Second:	3.14
	Gear Ratio (:1), Sixth:	1.00
	Gear Ratio (:1), Third:	2.11

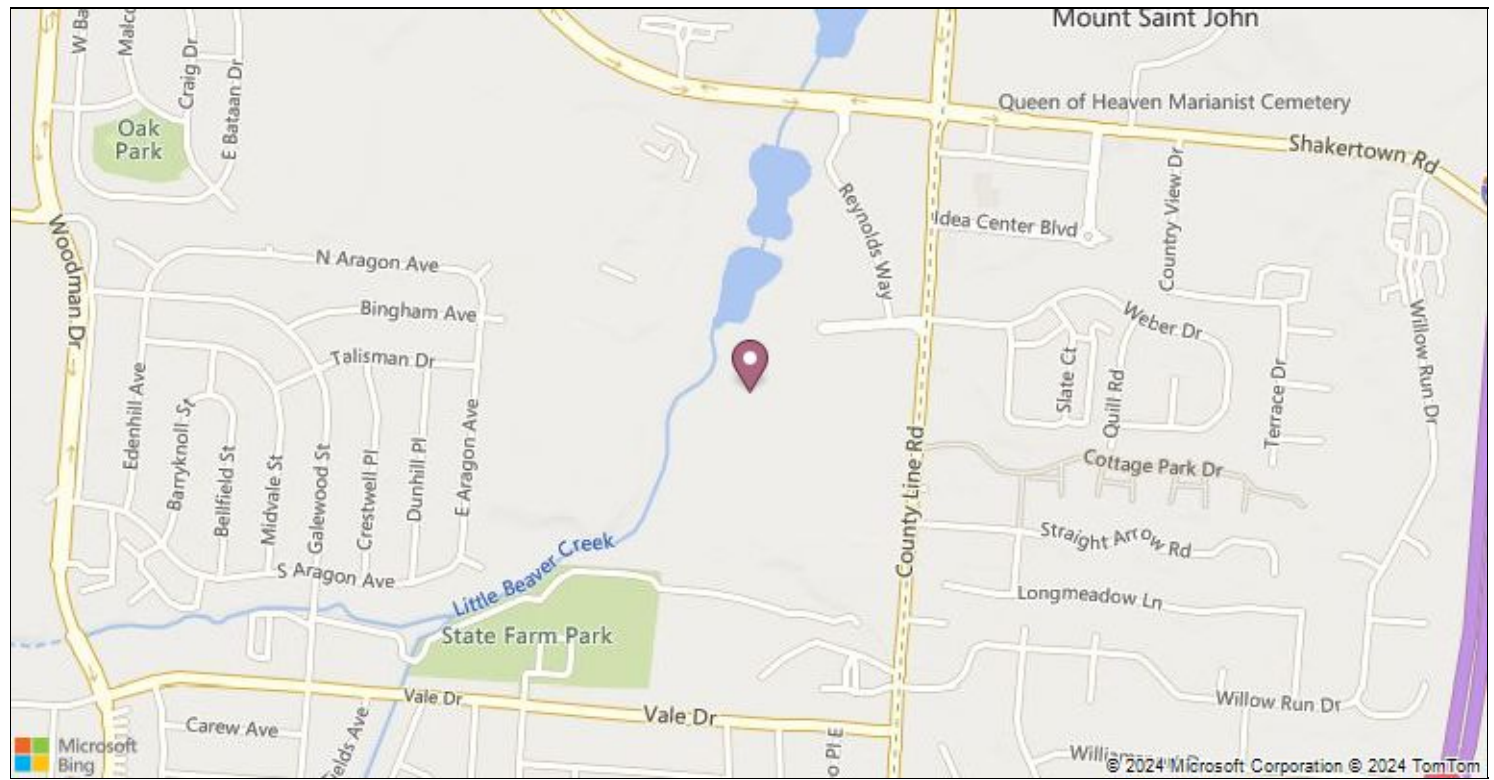
Powertrain - Basic Specifications

ENGINE	Displacement:	3.6 L/220
	Engine Order Code:	ERC
	Engine Type:	Regular Unleaded V-6
	Fuel System:	Sequential MPI
	SAE Net Horsepower:	285 @ 6400
	SAE Net Torque (lb ft):	260 @ 4800
FUEL ECONOMY	City EPA Fuel Economy Est (MPG):	17
	Fuel Economy Est-Combined (MPG):	20
	Hwy EPA Fuel Economy Estimate (MPG):	25
TRANSMISSION	Transmission Order Code:	DFT
	Transmission Type:	8
	Transmission Type Description Line 1:	Automatic w/OD

AutoDiary

Used 2019 Jeep Wrangler Rubicon 4x4 (#AV270021)

Dealer Map



Recommended Vehicles

Recommended Vehicle #1



2019 Toyota 4Runner TRD Pro 4WD

Business Unit:	Reynolds Motors
Stock #:	IC21523A
Stock Type:	Used
Mileage:	25000
Exterior Color:	Midnight Black Metallic
Price:	\$34,500.00

Prepared 5/8/2024

Page 11 of 12



Reynolds Motors
One Reynolds Way
Dayton, OH 45430

Bill McCarty
William_McCarty@ReyRey.com
(800) 767-0080
(888) 490-1571
www.nakedlimemotors.com

AutoDiary

Used 2019 Jeep Wrangler Rubicon 4x4 (#AV270021)

Recommended Vehicles

Recommended Vehicle #2



2021 Jeep Wrangler Unlimited Sport S 4x4

Business Unit:	Reynolds Motors
Stock #:	AV270022
Stock Type:	Used
Mileage:	59182
Exterior Color:	Bright White Clearcoat
Price:	\$34,501.00

Recommended Vehicles

Recommended Vehicle #3



2024 Jeep Wrangler Willys 4 Door 4x4

Business Unit:	Reynolds Motors
Stock #:	ADK445
Stock Type:	New
Mileage:	1
Exterior Color:	Sarge Green Clearcoat
Price:	\$32,997.00